

1 Bubbling Springs

Just a few miles from downtown Petoskey, this 15-acre preserve offers a short trail system and natural oasis for exploration. While enjoying a mix of mature upland hardwood forest and a swampy corridor with a small stream, try to find the springs.

From the intersection of US-31 and US-131 in Petoskey, travel south on US-131 1 1/2 miles to Intertown Rd. Turn right (west) on Intertown and travel 1.1 miles to the preserve on the right side of the road.



7 Allan and Virginia McCune

Approximately three miles of trail loops can be enjoyed at this 168-acre property with more than 1/2 mile frontage on Minnehaha Creek. A footbridge crosses the east branch of the creek. Dominated by hardwoods, the preserve also includes a pine plantation, meadow, and significant cedar swamp.

From Petoskey, take Mitchell Rd. 7 miles east to Maxwell Rd. Turn right and go 3/4 mile to the parking area on the right side of the road.



13 Stutsmanville Bog

One of the best examples of a fen or peatland in northern Michigan, this 65-acre preserve features a parking area, a quarter mile fern-lined trail to the bog, interpretive signs, and a bench with an overlook view. A fun place for young children to explore.

From Harbor Springs, take State Rd. north approximately 5 miles. Look for the preserve sign on the right-hand side of the road and a small parking lot with wooden fence around it.



19 CHARLEVOIX TOWNSHIP'S North Point

Owned by Charlevoix Township, these 27 acres and 1/2 mile of Lake Michigan shore lie adjacent to the Mt. McSaubia Recreation Area. A network of trails run behind the dunes and include a lake overlook.

From US-31 on the far north end of Charlevoix, take Mercer Rd. north (toward the lake). Turn left on Maple and then right on McSaubia. Look for parking on your left near the sign or continue to the parking/turn around near the lakeshore.



25 Susan Creek

A 1 1/2 mile trail system allows you to explore these 223 acres which include a mile of frontage on Susan Creek and nearly a mile along US-31.

Four miles east of Charlevoix and 11 miles west of Petoskey, the entrance to Susan Creek is across from the Little Traverse Wheelway. Parking and a green gate are on the south side of US-31 a few hundred yards southeast of the entrance to the Big Rock Restoration Site.



31 Vivian VanCampen

A short trail will take you along the banks of the Pigeon River and through the mixed hardwood/conifer forest of this 32-acre preserve with 1,750 feet of river frontage. The river runs swiftly at this location, making it especially beautiful and good for trout fishing.

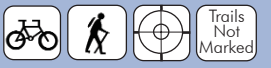
From Indian River, head east on M-68 for 5.9 miles. Turn right at Afion Road and travel .8 mile. Turn right at Haz Dr. and go .6 miles to the preserve on the right.



2 Fochtman

Rustic parking access and a portion of the North Country Trail allow you to explore this 243-acre preserve that includes 1/4 mile of frontage along Round Lake and 1/4 mile along US-31.

From the north end of Petoskey on US-31, turn onto M-119 towards Harbor Springs and go .8 mile. Turn right on Hiawatha Trail. Travel 1.2 miles and park on the left at the pull-off next to the lake.



8 Naas, Mauer, Raunecker and Leslie Preserves

These adjacent preserves total 45 acres just a few blocks west of downtown Harbor Springs. A trail connects local roads forming a neighborhood path through the preserves, including boardwalk across the wet regions.

From Main St. in downtown Harbor Springs, travel west past Holy Childhood Church until the road dead ends on Traverse St. Take a right and travel 4 blocks to Fourth St. Turn left. The preserve entrance is about 1/4 mile on the left.



14 Thorne Swift

Three easy trails meander through 30 acres of wetlands and uplands to a pond and to the beach. Interpretive facilities. A \$3 parking fee per car for non-township residents. Open Memorial Day to Labor Day, 10 am to 1/2 hour after sunset. Call 231.526.6401 for additional hours. Managed by West Traverse Township.

From Harbor Springs, take M-119 northwest 3.8 miles to Lower Shore Dr. on left. Follow Lower Shore Dr. for 1/2 mile. The preserve sign is on the left.



20 Charles A. Ransom

The 1 1/2 mile trail at this 80-acre preserve is quite steep, but at its highest points, provides views of both Lake Michigan and Lake Charlevoix. The preserve is a mix of woods and open fields.

From Petoskey, take US-31 south approximately 9 miles to Burgess Rd. and turn left. Go 3 1/2 miles to Quarterline Rd. and turn left. Then go 1 mile to Maple Grove Rd and turn left. Go 3/4 mile down Maple Grove and park at the road end.



26 Agnes S. Andreae

One mile of hiking trails and a foot bridge over the Pigeon River are features of this 81-acre preserve with more than a mile of river frontage. A cabin is available, by reservation, for use by community groups (call 231.347.0991).

From Petoskey, travel 14 miles north on US-31 and turn right on Brutus Rd. Travel 4 miles. Just past the intersection with Mundt Rd. look for the Chaboiganing entrance on right. Continue straight and take the next right and continue a few hundred yards to the Colonial Point entrance on your right.



32 Birge

A short, quarter mile trail and boardwalk lead to Loon Lake at this 435-acre property that features 1.2 miles of frontage on Lake Huron.

From the Mackinac Bridge, follow I-75 north about 14 miles to M-134. Take M-134 east 9 1/2 miles to Point Brulee Rd. (From Hessel take M-134 west roughly 2 miles to Point Brulee Rd.) Turn south and follow Point Brulee Rd. 1/4 mile. The preserve is on both sides of the road. Parking is at the logo sign on the left about 100 yards south of the trail entrance.



3 Goodhart Farms

One of the Conservancy's largest nature preserves boasts 595 acres, four parking areas and more than 7 1/2 miles of marked trails that are groomed for cross-country skiing. Limitless hiking possibilities.

From Harbor Springs, take State Rd. north 9 miles to Robinson Rd. Turn left on Robinson and travel 3 1/2 miles to the beginning of the preserve at the Hannah Rd. intersection. Summer parking is off of Hannah, Lone Rock, and Church Rds. Winter parking is off of Robinson Rd.



9 Oden Island

Jutting out into Crooked Lake, this 50-acre preserve offers a parking area, nearly a mile of foot trails, traislide benches, and views along the mile of lake frontage.

From Petoskey, take US-31 north 3 1/4 miles to Pickerel Lake Rd. Turn right and follow 4 miles until Pickerel turns into Channel Rd. Follow Channel Rd. 1 mile to Oden Island Rd. and turn left. Once on the island, turn right on Leeward Dr. and go to the end until you see the Conservancy logo sign.



15 Barney's Lake - Beaver Island

With 120 acres and 2,200 feet of Barney's Lake frontage, this preserve includes open bog, sedge meadow, cedar swamp, and uplands with old logging trails that allow for hiking and exploring.

From Port of St. James, take Kings Hwy. south 1 1/4 miles to Barney's Lake Rd. North and turn right. Continue 2 1/2 miles and the preserve can be found on both sides of the road. Look for a preserve sign on the left side. Parking is on the right.



21 Raven Ridge

140 acres and 1 1/2 miles of trails adjacent to the Raven Hill Discovery Center near East Jordan.

From Boyne Falls, take M-75 for one mile to Deer Lake Rd. Turn left on Deer Lake Rd and travel 3 1/2 miles to East Jordan/Boyne City Rd. Turn right. Go 4 miles and turn left on Pearsall Rd. Within 50 feet, turn left on Fuller Rd. Go up the big hill past Raven Hill Discovery Center until you reach a "T." Turn left on Rogers Rd. and the parking area is on the right.



27 UNIVERSITY OF MICHIGAN/ITC'S Colonial Point/Chaboiganing

A total of 482 acres and more than 2 1/2 miles of easy trails make for excellent hiking and cross country skiing through both fields and towering oak and pine trees at these adjacent lands.

From Petoskey, travel 14 miles north on US-31 and turn right on Brutus Rd. Travel 4 miles. Just past the intersection with Mundt Rd. look for the Chaboiganing entrance on right. Continue straight and take the next right and continue a few hundred yards to the Colonial Point entrance on your right.



33 Mackinac Bay

A parking area is found directly off of M-134, providing a handicap accessible overlook of the marsh at this 22-acre property with a quarter mile of Lake Huron frontage. Great lakes marshes sustain most fish for some period of their life cycles as well as populations of migratory birds.

From the Mackinac Bridge, follow I-75 north about 14 miles to M-134. Take M-134 east 13 miles to Hessel. Continue east on M-134 and the preserve is less than 1/2 mile on the right.



4 EMMET COUNTY'S The Headlands

Little Traverse Conservancy assisted Emmet County in acquiring this incredible 600-acre property with 2 1/2 miles on the Straits of Mackinac. Nearly 4 1/2 miles of trails are available. For more information, call 231.347.6536 or visit www.emmet.mi.us/parkrec/headlands.htm

From Mackinaw City, take Central Ave. west for 2 miles to its end. Turn left and go .3 mile to the entrance road on the right. A kiosk is found shortly on the right.



10 Round Lake

Located next to the Conservancy office, this 58-acre preserve with a half mile of frontage on Round Lake offers easy, close-to-town trails totaling almost a mile.

From US-31 in Petoskey, take M-119 about 1 1/2 miles north to Powell Rd. Turn right on Powell and take the first driveway on the right, also the entrance to the Little Traverse Conservancy office. The trailhead is directly off of the parking lot.



16 Nathan "Barry" Driggers

A 1 1/2 mile easy trail system meanders through this 75-acre preserve that provides views of Lake Charlevoix. Once a farm, the property includes a pine plantation, open fields, and a high, forested ridge.

From the intersection of US-31 just north of Charlevoix, head east on the Boyne City-Charlevoix Road and travel 5.3 miles. The preserve is found on the left side of the road.



22 Rogers Family Homestead

Located just upstream from a public access/canoe launch, this 86-acre preserve includes 1.2 miles of frontage along the Jordan River as well as an easy trail system that covers 1 1/2 miles.

From downtown East Jordan, travel northeast and then south on M-32 for 2.1 miles to Rogers Road. Turn right and the preserve is 1/2 mile down on the right.



28 Helmer's Dam/ Robert D. VanCampen

Mostly wooded, the primary feature of this 200-acre property is the 1 1/4 miles of Pigeon River frontage. A trail leads to the river which is a popular destination for fly anglers. Before its protection, this was the largest remaining undeveloped private tract along the river.

From Indian River, take M-68 east 5 1/4 miles to Afion Rd. Turn right and travel 1.3 miles to the preserve on the left.



34 Marquette Island Preserves

More than 1,400 acres and nearly five miles of Lake Huron shoreline are protected with the Seiberling Stewart and Aldo Leopold Preserves on this island within Les Cheneaux. A public kayak launch (and beach) near Hessel provides one access point.

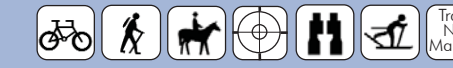
From the Mackinac Bridge, follow I-75 north about 14 miles to M-134. Take M-134 east 13 miles to Hessel. You can reach the islands from launches in Hessel or further east in Cedarville. Only accessible by boat.



5 Elmer Johnston

Old logging trails provide hiking opportunities and spectacular views of Lake Michigan and Beaver Island on this 220-acre property that was once tilled farmland and pasture. A mix of rolling hardwoods and open meadowland.

From Harbor Springs, take State Rd. 9 miles to Robinson Rd. Turn left on Robinson and travel 4 miles to Church Rd. Take a right on Church and travel 1/2 mile to the Johnston Preserve on the right.



11 Stony Point

This 50-acre property includes 3,000 feet of Paradise Lake (aka Carp Lake) shoreline. Trails have been developed on adjacent township land.

From the intersection of US-31 and Gill Rd. in Carp Lake, turn toward the lake and travel left along Paradise Trail for 4 miles. Turn right on Paradise Lake Rd. and travel to Lakeshore Dr. Turn right and about 1/2 mile down on the right, look for the preserve sign and parking area. A rustic trail heads to the water.



17 Little Sand Bay - Beaver Island

This 60-acre preserve includes a mix of conifer forest, cedar swamp, and sand dunes. A trail and footbridges allow visitors to explore without damaging the sensitive habitat including that of the endangered Michigan Monkey flower. Public access to a 1/4 mile of Lake Michigan with a shallow swimming beach.

From the Welke's airport, go south on East Side Dr. for approximately 200 yards. Look for a sign on the left side of the road.



23 St. Clair Lake/Six Mile Lake

A joint project between three local conservancies, this 261-acre property with 2.3 miles of water frontage provides a launch for canoes or kayaks and a short hike to a platform overlooking St. Clair Lake near the headwaters of the Chain of Lakes.

In Ellsworth, take C-48 east approximately two miles to South Arm Township Park and a small parking area on the right (south) side of the road. There is a rustic boat launch on the river.



29 Lee Grande

A former buffalo ranch, these 2,400 acres are now owned by the Conservancy but managed by the State to maintain high quality wildlife habitat. A network of criss-crossing two track roads allow for low-impact recreation including cross-country skiing, horseback riding, and hunting.

From Indian River, take M-68 east for 9 miles. Turn left on M-33 and travel 3.4 miles to a sign on the right.



35 Bailey-Lagerstrom - Sugar Island

More than 422 acres and over two miles of St. Mary's River/Lake Huron shore.

From downtown Sault Ste Marie, go east to the Sugar Island ferry. Once on the island, drive 3.7 miles east on 1 1/2 Mile Rd. Turn right on Brasser Rd. Drive 11 miles south on Brasser (which turns into Homestead Rd. after about 4.5 miles.) The parking area is on Homestead Rd. on the right at a big curve. Give yourself at least 15 minutes to get back to the ferry. The ferry returns to the mainland on the hour and half hour.



6 Ray Johnston

Near Pickerel Lake, this 52-acre preserve includes more than one mile of trails, part of which travel through a steep bluff created by post-glacial Lake Algonquin.

From the intersection of M-119 and US-31 on the north end of Petoskey, follow US-31 1/2 mile to Pickerel Lake Road. Turn right and follow Pickerel Lake Road for approximately 7.5 miles (the road has several confusing turns at intersections, so watch the road signs). Turn left on Ellsworth Road, go about one mile, and turn left on Artesian Lane, where a small fenced-in parking lot is located at the Preserve sign.



12 STATE OF MICHIGAN'S Sturgeon Bay Dunes

With 750 acres and nearly a mile of Lake Michigan shoreline, this protected property is now a part of Wilderness State Park. It is one of the most spectacular public beaches available in northern lower Michigan. No formal trails on property but the North Country Trail can be accessed from several points nearby.

From Cross Village, follow M-119 north along the coast approximately 5 miles until it dead ends at Sturgeon Bay Trail. Turn left and you will soon be at public shoreline with many parking options.



18 CENTRAL MICHIGAN UNIVERSITY'S Miller's Marsh - Beaver Island

Miller's Marsh is the largest and most diverse true marsh found on the island. A one mile trail provides easy access around the marsh.

From St. James, take the King's Hwy. south for 4 miles. Turn right (west) onto Paid Een Ogs Rd. Continue about 1 1/2 miles. At the four corners and airport turn left (south) onto West Side Dr. Continue on West Side Dr. approximately five miles to Miller's Marsh which will be on the left (east) side of the road.



24 Sleepy Hollow

More than one mile of easy walking trails meander through this 55-acre property that includes a spring-fed trout stream emptying to the South Arm of Lake Charlevoix. Beautiful second growth forest of maple, beech, hemlock, and ash.

From Charlevoix, take M-66 south approximately 7 miles and turn left onto Sleepy Hollow Lane, across the road from Phelps Rd. Drive in to the parking area on the left.



30 Seven Springs

A parking area off Chippewa Beach Rd. leads to an approximately 1/2 mile of trail leading to a bluff overlook of Burt Lake. The property includes 53 acres and 2,200 feet of lake frontage. The endangered Michigan Monkey Flower is protected here.

From Hwy. 27/75 in Indian River, turn west onto Prospect Rd. just north of the bridge. Continue straight onto Chippewa Beach Rd. 1.1 miles which curves north. Look for the preserve sign about 1/4 mile past the curve.



36 Jinny Palms

Moose, bear, and other wildlife are known to use this 360-acre property. Old logging trails.

From Paradise, go west on U.S. 123 toward Tahquamenon Falls for about 4 1/2 miles. Turn right onto Farm Truck Rd. (also marked as designated snowmobile route #452). Go north on Farm Truck Rd. about 1/2 mile and go left at the fork, staying on Farm Truck. Go 4 miles, then go right at the fork onto Mapleblock Rd. (still marked as #452). Go north on Mapleblock 5.4 miles and at a log landing area, go right following signs for #452. Go about 1 more mile and the preserve entrance is left.



KEY

Wonderful Properties Explore these by People Who Care They've Been Protected

231.347.0991 - www.landtrust.org
Harbor Springs, MI 49740
3264 Powell Road
Little Traverse Conservancy

Icons: Bicycling, Canoeing or Kayaking, Hiking and Snowshoeing, Horseback Riding, Hunting - By written permission only. Visit www.landtrust.org for details., Parking Area, Scenic view/birdwatching, Skiing (Cross Country) (ungroomed unless noted), Swimming beach, Signs and maps mark trails, No signs or maps

Nature
LITTLE TRAVERSE CONSERVANCY'S
Preserve Map

PRESERVE GUIDELINES

The Conservancy works hard to balance the public uses offered on our preserves with the protection of their natural integrity and scenic beauty so they will remain, as they are, for future generations. Recreational, educational, and scientific use of the preserves is encouraged, as long as it does not interfere with our primary goals of preservation and protection. We welcome you to explore and enjoy these beautiful properties, keeping in mind that you are an emporary visitor to the homes of many plants and animals.

Please enjoy: Hiking, birdwatching, cross-country skiing, snowshoeing, fishing, and similar low-impact activities. Many of the properties include water frontage and one could easily canoe or kayak by them, but please note that none of these properties include developed boat launches.

Please refrain from: Camping, fires, dumping or littering, removal of vegetation, off-road vehicles, and snowmobiling.

Please remember:
• Hunting is allowed only on designated preserves and with written permission only. Visit www.landtrust.org or contact the office for more information.
• State law requires that all dogs must be on a leash while visiting preserves.

You can help us care for these lands! Please contact the Conservancy office at 231.347.0991 if trails, parking areas, or signs need attention or if you notice any inappropriate activity on a preserve. Preserves and trails require a good deal of management and maintenance and we greatly appreciate the assistance of the many individuals who help monitor and provide stewardship for our preserves and trails. Contact our office if you are interested in participating in the Conservancy's stewardship program.

Public parks are generally established to handle more intensive use than our preserves and are maintained by state and local governments across the North. Those parks which have been established with help from the Conservancy are identified in this guide. Please refer to the rules and regulations of the appropriate jurisdiction when visiting these properties.

Visit www.landtrust.org for more information about Conservancy-protected preserves and natural areas.

37 Round Island Point

LTC's largest preserve at 1,024 acres and 1 1/4 miles of Lake Superior shoreline as well as 1 1/2 miles of trail.

From Sault Ste. Marie, head south on Hwy. 75 to exit 392. Travel about one mile and turn left (south) on 20th Street (aka S. Bakerside Road) and travel three miles. Turn right on 6 Mile Rd. Go five miles and turn right (north) on Birch Point Rd. (east loop). Go 1/2 mile and look for signs on right. Turn right onto paved road. Follow one mile to parking and trail head at end.



38 Vermilion

Enjoy 1.75 miles of Lake Superior shoreline at this spectacular 175-acre property. Operated as a life saving station for decades, the buildings are now used by researchers studying the plants and wildlife of the region. The back wetlands are old cranberry bogs.

From Paradise, travel north on N. Whitefish Rd. 5.2 miles. Turn left at Vermilion Rd. In .6 mile, be sure to stay slightly to the right on Vermilion Rd. and continue for 6.1 miles. Again, stay right for 1.3 miles until you reach the preserve.



39 Clyde and Martha Williams

The Conservancy's first preserve on Drummond Island, these 80-acre include an easy 1.3-mile trail system. Points of interest include several forest types and an old stone wall.

From Detour, take the ferry to Drummond Island. Drive onto M-134/East Channel road for 7.9 miles. Turn left at South Townline Rd. Travel 1.5 miles to Drummond Rd./East Maxton Rd. Turn right and go 1/2 mile to the preserve on the left.



- Emmet County
- Charlevoix County
- Cheboygan County
- Mackinac County
- Chippewa County

NATURE PRESERVES & NATURAL AREAS

PROTECTED THROUGH
LITTLE TRVERSE CONSERVANCY

One of the best ways to explore Northern Michigan is to visit nature preserves and natural areas protected through the Little Traverse Conservancy. All across northern Lower and eastern Upper Michigan, you can find some of the region's most treasured natural lands protected and available for public enjoyment.

Of the more than 200 nature preserves and natural areas protected through Little Traverse Conservancy, this map features those that are most accessible. Includes are a handful of lands protected with Conservancy assistance that are now owned and managed by local units of government.

All of the properties described here are living treasures that will remain protected FOREVER!

Visit www.landtrust.org
for more information about
Conservancy-protected preserves
and natural areas.



- EMMET COUNTY**
1. Bubbling Springs
 2. Fochtman Nature Preserve
 3. Goodhart Farms Nature Preserve
 4. The Headlands County Park
 5. Elmer Johnston Nature Preserve
 6. Ray Johnston Nature Preserve
 7. Allan and Virginia McCune Nature Preserve
 8. Naas, Mauger, Rauneker & Leslie Preserves
 9. Oden Island Nature Preserve
 10. Round Lake Nature Preserve
 11. Stony Point Nature Preserve
 12. Sturgeon Bay Dunes
 13. Stutsmanville Bog Nature Preserve
 14. Thorne Swift Nature Preserve

- CHIPPEWA COUNTY**
35. Bailey-Lagerstrom Nature Preserve
 36. Jinny Palms Nature Preserve
 37. Round Island Point Nature Preserve
 38. Vermilion Point Nature Preserve
 39. Clyde and Martha Williams Nature Preserve

- MACKINAC COUNTY**
32. Birge Nature Preserve
 33. Mackinac Bay Nature Preserve
 34. Marquette Island Nature Preserves

- CHARLEVOIX COUNTY**
15. Barney's Lake Nature Preserve
 16. Nathan "Barry" Driggers Nature Preserve
 17. Little Sand Bay - Beaver Island
 18. Miller's Marsh - Beaver Island
 19. North Point Natural Area
 20. Charles A. Ransom Nature Preserve
 21. Raven Ridge Nature Preserve
 22. Rogers Family Homestead Nature Preserve
 23. St. Clair Lake/Six Mile Lake Natural Area
 24. Sleepy Hollow Nature Preserve
 25. Susan Creek Nature Preserve

- CHEBOYGAN COUNTY**
26. Agnes S. Andreae Nature Preserve
 27. Colonial Point Memorial Forest/ Chaboiganing Nature Preserve
 28. Helmer's Dam/Robert D. VanCampen Nature Preserve
 29. Lee Grande Ranch
 30. Seven Springs Nature Preserve
 31. Vivian Van Campen Nature Preserve



Fochtman - Emmet Co.



McCune - Emmet Co.



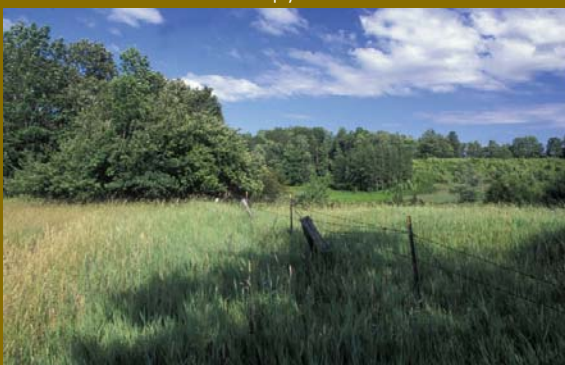
Sturgeon Bay - Emmet Co.



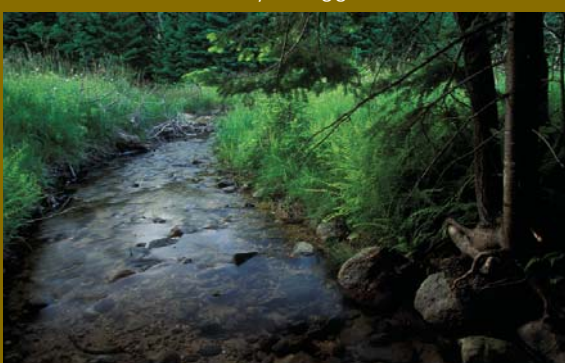
Goodhart Farms - Emmet Co.



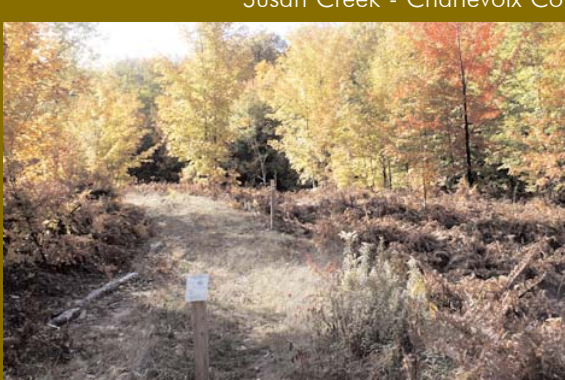
Sleepy Hollow - Charlevoix Co.



Nathan "Barry" Driggers - Charlevoix Co.



Susan Creek - Charlevoix Co.



Raven Ridge - Charlevoix Co.



Andreae - Cheboygan Co.



Chaboiganing - Cheboygan Co.



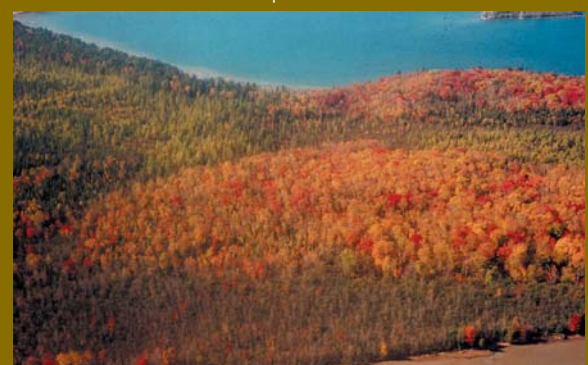
Lee Grande Ranch - Cheboygan Co.



Birge - Mackinac Co.



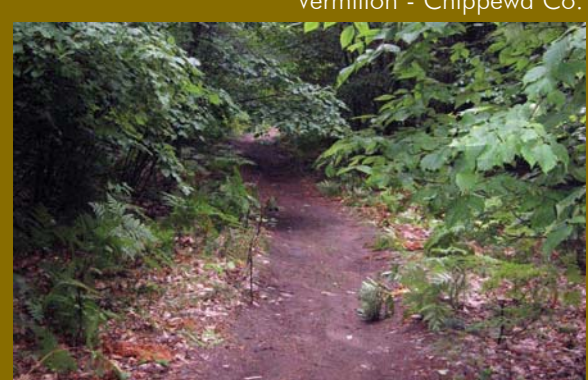
Marquette Island - Mackinac Co.



Round Island Point - Chippewa Co.



Vermilion - Chippewa Co.



Williams - Chippewa Co.