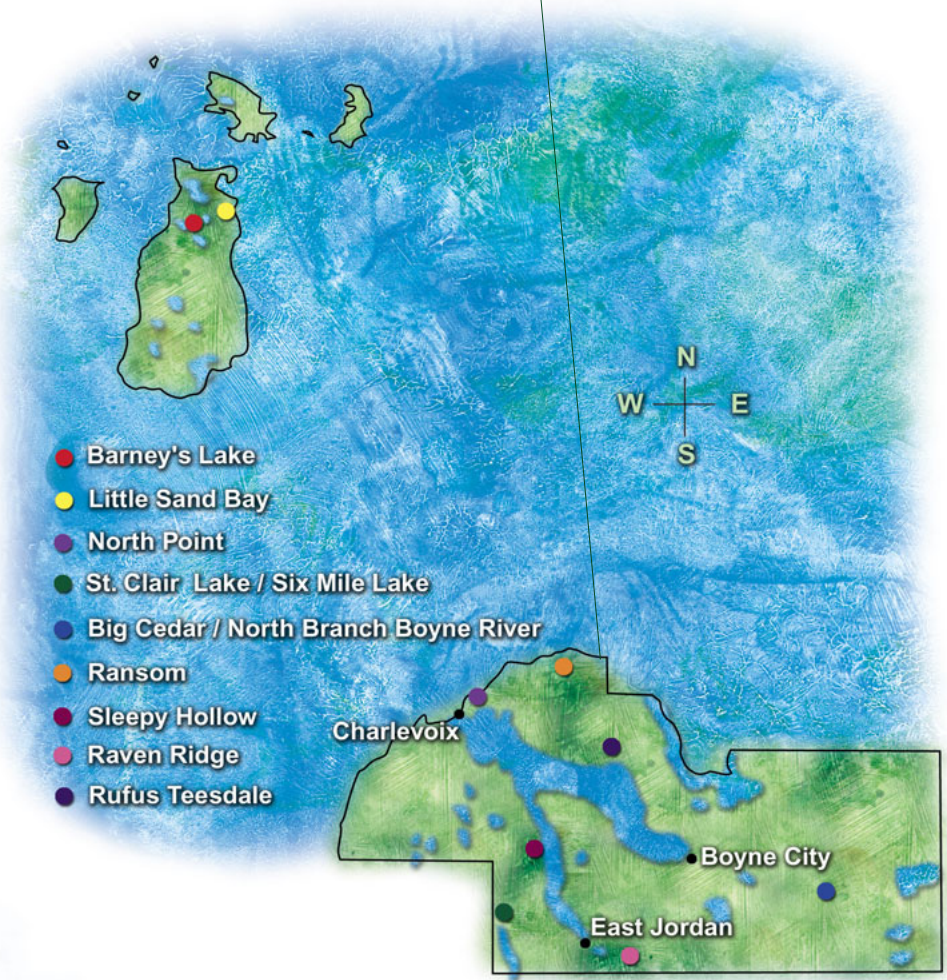
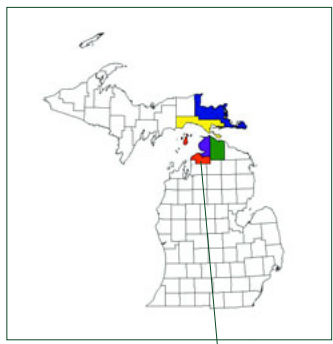


map of Charlevoix County Preserves



- Barney's Lake
- Little Sand Bay
- North Point
- St. Clair Lake / Six Mile Lake
- Big Cedar / North Branch Boyne River
- Ransom
- Sleepy Hollow
- Raven Ridge
- Rufus Teesdale

Barney's Lake Nature Preserve

Size: 120 acres

Frontage: 2,200 feet on Barney's Lake

Characteristics: This preserve encompasses a rich variety of natural habitats.

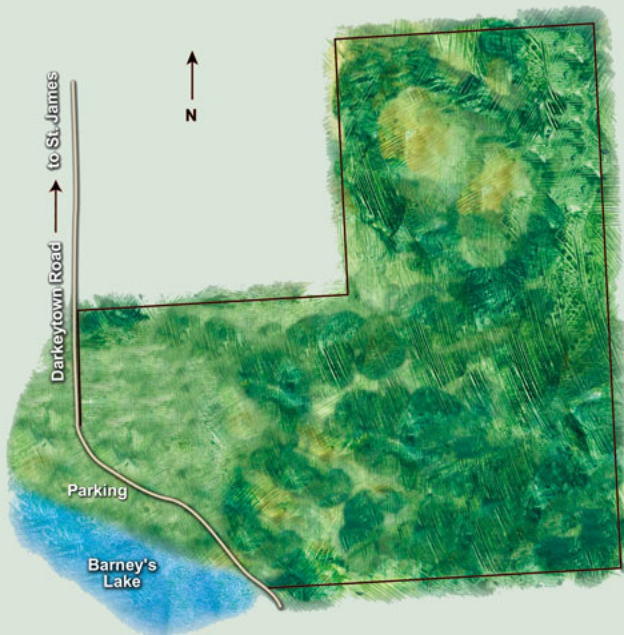
Accessibility: Several two-track roads intersect the property, providing opportunities for walking. A lake viewing area includes benches built by local students.



Barney's Lake Preserve is located in the north central part of Beaver Island, about three miles southwest of St. James. The preserve was donated to the Conservancy in 1988 by the heirs of Bernard and Margaret O'Donnell. Bernard O'Donnell (great-grand nephew) and Theresa Gacek (great-great-grand niece) were instrumental in carrying out the family's wishes that the land be kept in its natural state and available to the public.

The aquatic habitat of the preserve moves into an open bog on the southeast tip of the lake and is bordered by sedge meadows along the beach. The southwestern corner of the preserve is a cedar swamp. The old O'Donnell homestead site is east of the lake across from the lake viewing area. Once cleared fields are now a study in plant succession. Stones are piled along the boundaries of what were once fields and pastures.

Wildlife commonly seen include loons, great blue herons, whitetail deer, beaver, and snowshoe hares.



Directions: From Port of St. James, take Kings Hwy. south to Darkeytown Road and turn right. Continue about two miles and the preserve can be found on both sides of the road. A sign will be visible on the left side.

Big Cedar/North Branch of the Boyne River Nature Preserves

Size: 60 acres

Frontage:

1/3 mile on the north branch of the Boyne River and 1/3 mile along Kuzmick Creek.

Characteristics:

Historically, this region was a cedar swamp that has grown to forested wetlands.

Accessibility:

An old railroad bed is being converted to a trail that runs east-west across the properties, just south of the Boyne River.



In 1992, James North donated 20 acres with 620 feet of frontage on the north branch of the Boyne River to the Conservancy. The preserve is part of a cedar swamp with a few scattered tamarack and bigtooth aspen. The northern boundary borders Thumb Lake Road.

In 1998, Dr. W.A. and EvaBelle Deppa donated an adjacent 40-acre preserve. The river system provides habitat for mink, otter, raccoon, songbirds, and other wildlife as well as cold water aquatic species such as brook and brown trout.



Directions: From US-31 in Boyne Falls, take Thumb Lake Road (C-48) east approximately 2½ miles. The preserve is on the right. A preserve sign is visible from the road.

Little Sand Bay Nature Preserve

Size: 60 acres

Frontage: 1,300 feet on Lake Michigan

Characteristics: Provides public access to the lake and to an excellent shallow swimming beach. The property includes a mix of conifer forest, thick cedar swamp, and sand dune habitats.

Lake Huron Tansy and other threatened or endangered species thrive here, including the Michigan Monkey Flower, which is found in only 20 other known sites in the world.

Accessibility: A trail and footbridges allow visitors to explore this spectacular parcel without causing damage to this sensitive habitat.

Designated by a group of island residents as the number one priority for acquisition and preservation, the Conservancy acquired the original 60 acres in 1994. The Conservancy assisted the state in acquiring an additional 30 acres in 1999. When added to adjacent state land to the north, over 1¼ miles of shoreline are now protected.



Directions: From the Welke's airport, go south on East Shore Drive for approximately 200 yards. Look for a sign on the left side of the road.

CHARLEVOIX TOWNSHIP'S North Point Nature Preserve

Ted Cline, Photair



Size: 27 acres

Frontage: 2,800 feet
on Lake Michigan

Characteristics:

The many trails offer opportunities to see successional stages of forest cover, Lake Michigan shoreline, and three threatened plant species: Pitcher's Thistle, Lake Huron Tansy, and Pumpell's Bromegrass.

Accessibility: Located adjacent to the Mt. McSaubia recreation area just outside the city of Charlevoix, you can drive to the trailhead or enter from Mt. McSaubia. A network of trails cover the property (most frequently used trails are shown on map).

North Point was purchased with funds contributed by the people and businesses of the Charlevoix area, with the help of a grant from the Michigan Natural Resources Trust Fund. The land was deeded by the Little Traverse Conservancy to Charlevoix Township as a public nature preserve.

Offering both beach access and wooded back dunes, this property provides excellent opportunities to hike and enjoy the diversity of northern Michigan. Local classes frequently visit the preserve for field trips led by Conservancy naturalists.



Directions: From US-31 on the far north end of Charlevoix, take Mercer Road north to Pleasant Street. Turn left onto Mt. McSaubia Road. Turn right before the dirt road. The preserve is on the left.

Charles A. Ransom Nature Preserve

Size: 80 acres

Characteristics:

A mix of open fields providing scenic views and woods.

Accessibility:

From the parking area you will find the trailhead to a 1½ mile trail. The terrain is quite steep and hilly.



Phoenix Photographic Studio

Commanding one of the most spectacular views in northern Michigan, the Ransom Preserve is well worth a visit. The property, along with the manager's residence, was donated in 1976 by Woodbury and Christiana Ransom in memory of their son. From its highest elevation of 320 feet above Lake Michigan, viewers can see most of western Charlevoix County and a broad expanse of Lake Michigan on the horizon.



Directions: From Petoskey take US-31 south approximately 9 miles to Burgess Road and turn left. Go 3½ miles to Quarterline Road and turn left. Then go 1 mile to Maple Grove Road and turn left. The parking lot is about ¾ mile down Maple Grove Road.

Raven Ridge Nature Preserve

Size: 140 acres

Characteristics:

A mix of open fields and wooded ridges. The property includes an old homestead site which will be used for archeological studies with visiting students.

Accessibility: A

rustic parking area off of a dirt road has been cleared at the entrance of a new trail system

established in 2002. Trails total more than 1½ miles and are quite hilly. One trail offers a beautiful view of the valley below.

The Raven Ridge property was purchased in 2001 as a result of joint fundraising efforts by the Conservancy and the people of Raven Hill Discovery Center. The Discovery Center property lies adjacent to the preserve providing environmental education opportunities on more than 300 acres of land.



Cheri Leach



Directions: From Petoskey, take US-31 south to the village of Boyne Falls. Turn west at the blinker light in Boyne Falls and go .8 miles along M-75. Turn left onto C-48 (Deer Lake Road). Follow to stop sign and turn left toward East Jordan (still C-48). Go 4 miles and turn left on Pearsall Road. Within 50 feet, turn left onto Fuller Road. Go up the big hill and pass Raven Hill Discovery Center on the right. Continue until you reach a “T.” Turn left and look for the parking area on the right.

Rufus Teesdale Nature Preserve

Size: 10 acres

Frontage: 660 feet on Horton Creek

Characteristics: Primarily cedar wetlands.

Accessibility: A rustic wooden bridge allows crossing of the creek.



Phil Ohmer

Located just west of the small community of Horton Bay, this preserve offers locals and visitors an opportunity to enjoy nature first hand.

In addition to its significance in protecting water quality, the Teesdale Preserve is part of a locally important winter deer range. Evidence of snowshoe hare, mink, weasel, and a variety of waterfowl has

also been found among the cedar, white pine, and aspen growing on the property.

Ernest Hemingway was known to have fished Horton Creek, a creek that is mentioned in several of his books.

“Hemingway called this ‘the last great country,’” said Rufus Teesdale, who donated a significant portion of funds needed for the property’s purchase, along with funds from an anonymous donor. “Not much of the land is left the way Hemingway saw it. All we have left are bits and pieces, and his wonderful descriptions of what it used to be. When we can save some of it without expropriating it, everybody gains.”



The Bridge at Horton Creek.

Directions: From Petoskey, take US-31 south to Horton Bay Road. Turn left and travel until it dead ends at Boyne City-Charlevoix Road. Turn right and the preserve is the second driveway on the right.

St. Clair Lake/Six Mile Lake Natural Area

Size: 192 acres

Frontage: 8,155 feet along St. Clair Lake and Sinclair River

Characteristics: The protected land includes marshes, cedar wetlands, fields, and uplands.

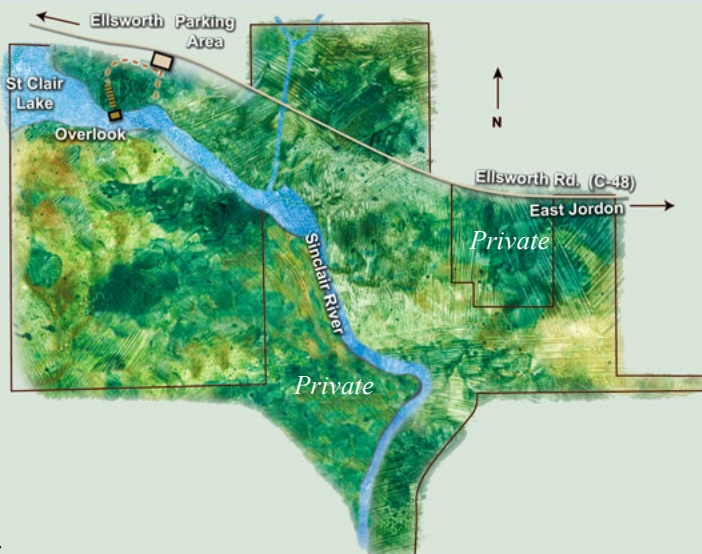
Accessibility: A small parking area is found off Ellsworth Road. A short, woodchipped trail and boardwalk leads to an overlook of St. Clair Lake. There is a good place to put in a canoe or kayak at the end of the parking area.



This natural area provides one of the longest stretches of undeveloped shoreline within the Elk River Watershed. It is located in the upper portion of an interconnecting chain of lakes and rivers which crosses the Charlevoix-Antrim county border. The Sinclair River connects the two lakes.

The protection of the natural area was made possible by the efforts of a local grassroots group who initiated the project, raised funds, and prompted the first joint project between the Little Traverse Conservancy, Grand Traverse Regional Land Conservancy, and local residents. Funds were also provided by the Malpass Family and South Arm Township.

This is a beautiful place for silent water sports. Mink, otter, great blue heron, belted kingfishers, and an occasional bald eagle are among the region's inhabitants.



Directions: An established parking area is found at the South Arm Township Nature Preserve portion of the natural area. From the intersection of M-66 and Ellsworth Road in East Jordan, take Ellsworth Road west approximately 4 miles. The entrance is on the left.

Sleepy Hollow Nature Preserve

Size: 55 acres

Frontage: A spring-fed stream with brook trout flows through the property.

Characteristics:

The property is dominated by Sugar Maple, American Beech, and Ash, and also includes Aspen and Hemlock.

Accessibility:

A small parking area and more than one mile of walking trails are available.

The Sleepy Hollow Nature Preserve, donated to the Conservancy in 1980 by an anonymous donor, is important to the protection of the Lake Charlevoix Watershed. The creek that runs through it is surrounded by swamp throughout its length within the preserve, emptying into the South Arm of Lake Charlevoix.

The beautiful forest is second growth, and large stumps with fire scars scattered throughout the preserve stand as testimony to the past logging days.



Phil Ohmer



Directions: From Charlevoix, take M-66 south approximately 7 miles to Sleepy Hollow Lane, which is opposite Phelps Road. Turn left onto Sleepy Hollow Lane. Parking area is just a short way down on the left.

Other Preserves in Charlevoix County



Balsam Creek Preserve

The Conservancy purchased these 42 acres, some of the most highly developable property between Charlevoix and Petoskey in 2001. Located across from a State of Michigan scenic pullout, the property's wetlands and roadside buffer will remain in perpetual safekeeping.



Dressel Nature Preserve

Betty Dressel donated this 10-acre parcel located in the city of East Jordan in November 1992. The land includes 610 feet of frontage on the Jordan River and is almost entirely wetland, providing refuge and food for a variety of wildlife including deer, geese, and ducks. It also contributes to water quality protection for the Jordan River.



Jeremiah Haggerty Wildlife Preserve

Daniel Haggerty and his sister, Margaret, donated this 10-acre parcel in 1990 in memory of their ancestor, Jeremiah, who lived from 1870-1888. Mud Creek flows through the property and drains into Susan Lake. Dwarf raspberry, an endangered plant, grows on the property which is near the Mulberry Farm Preserve.



Horton Creek Nature Preserve

Horton Creek Preserve ranges from hardwood forest to cedar swamp to sedge marsh bordering Horton Creek. These 20 acres include 545 feet of frontage on Church Road and 1,200 feet on the westerly bank of Horton Creek, which is the fourth largest tributary flowing into Lake Charlevoix.

Charlevoix County

The preserve was donated in 1990 by Mr. and Mrs. Robert Sooy.



Erber Nature Preserve

Tom Erber, Dick Georgi, and the partners of New Ireland Shores donated 450 feet of Lake Michigan shoreline property on Beaver Island. These donors also gave a conservation easement which will protect land across from the preserve. The donation to the Conservancy was given in connection with the development of several single-family homesites in the area.



Kieren Nature Preserve

This preserve consists of two lots in the Susan Shores subdivision of Charlevoix County. It borders Boyne City Road and has frontage on Susan Lake as well. Kathleen Kieren donated the original parcel to the Conservancy in 1993. An acre addition was purchased in 2001.



Loeb Nature Preserve

This one and a half acre preserve has 500 feet of rocky, rugged shoreline along Lake Michigan. Donated by Tom and Kaye Loeb in 1980, the preserve is located along US-31 near Nine Mile Point between Charlevoix and Petoskey.



Marvin Memorial Nature Preserve

In 1999, Ella Genshaw donated her family's 120-acre property in honor of her parents and siblings. The property includes a wide variety of habitats including streams, rolling uplands, high

meadows, and some huge hemlock trees. Three creeks meander through the land, eventually draining into Deer Creek, a primary tributary to the Jordan River.



Marx Nature Preserve

This preserve consists of 2.9 acres in the Zenith Heights subdivision near Susan Lake. A beech-maple forest dominates this hilly parcel, which has frontage on Flagg, Zenith Heights, and Valley Brook roads. This parcel was donated in 1991 by Ray and Jean Marx.



Miller's Marsh

This property, purchased by the Conservancy in 1997, includes 200 acres of marsh and wetland with frontage on a small inland lake. It is known for its large and unique amphibian populations. The property is used by the Central Michigan University Biological Station, and was conveyed to CMU in 1998 for research and recreational use.



Mulberry Farm Nature Preserve

This 12.8-acre preserve includes two separate parcels with 240 feet of Susan Lake frontage and more than 2,000 feet of road frontage. The larger parcel is at the intersection of Boyne City and Quarterline roads and the smaller parcel is located across Boyne City Road bordering Susan Lake. An open meadow, cedar wetland, pond, and creek provide diverse habitats for many species. Richard Lobenherz donated the property in the early 1990s.

Charlevoix County

Oyster Bay Nature Preserve

Twenty-three acres of thick forest make up this preserve, located off Boyne City Road on Oyster Bay of Lake Charlevoix. Fallen trees, dense vegetation, and wet areas provide excellent habitat for many animals such as deer, grouse, and other birds. More than 800 feet of swampy shoreline offers shelter for waterfowl, and the wetlands help maintain the water quality of Lake Charlevoix. C.T. and Francis Martin donated this parcel in 1982.



Schulz Nature Preserve

Forty acres of mixed hardwoods with scattered pine stands made up of Austrian pine, Colorado spruce, and Douglas firs constitute this nature preserve. The parcel adjoins 120 acres of state land to the east and borders Pincherry Road to the west. Listed under the Commercial Forest Reserve Act, the preserve is monitored for effective tree farming. Helmuth Schulz, Jr. donated the property in 1991. Mr. Schulz and his wife, Annette, constructed a trail following the perimeter.



Scollin/Lee Nature Preserve

Jim and Catherine Scollin and Brendan and Mary Lee donated this 2.7 acre parcel in 1992. It is situated between M-75 and the Boyne River about three miles east of downtown Boyne City. It is mainly a low, wet area with a steep slope up to the road.



Seibert Preserve

This designated .5-acre wetland with frontage on Susan Lake was donated by Richard and Judy Seibert in 1991.

South Arm Creek Preserve

In 1986, the Conservancy worked with the Walloon Lake Association Trust to raise funds to purchase 10 acres with 450 feet of Walloon Lake frontage. The land is held by the Walloon Lake Trust as a preserve.



Three Bears Mountain (Deppa Family) Nature Preserve

Dr. W.A. and EvaBelle Deppa donated this 160-acre preserve in 1998 and 1999. The property adjoins, and is only accessible through, state forest land to the east. It is composed of beautiful rolling hardwoods.



Weislik Nature Preserve

Ron and Carol Weislik donated this parcel to the Conservancy in 1975. It is located in the Clipperview Subdivision near Fisherman's Island in Charlevoix. The four acres are dominated by northern white cedar swamp, and Fisherman's Creek flows through the property towards Lake Michigan.



Winchester Family Preserve

In 1996, the Conservancy, with the help of a generous grant from the Winchester Funeral Home of Charlevoix, was able to acquire more than 1,200 feet of shoreline and four acres on West Twin Lake. West Twin Lake is the northern most lake within the Elk River Chain of Lakes Watershed, known for its clear, spring fed lakes and high quality trout streams.