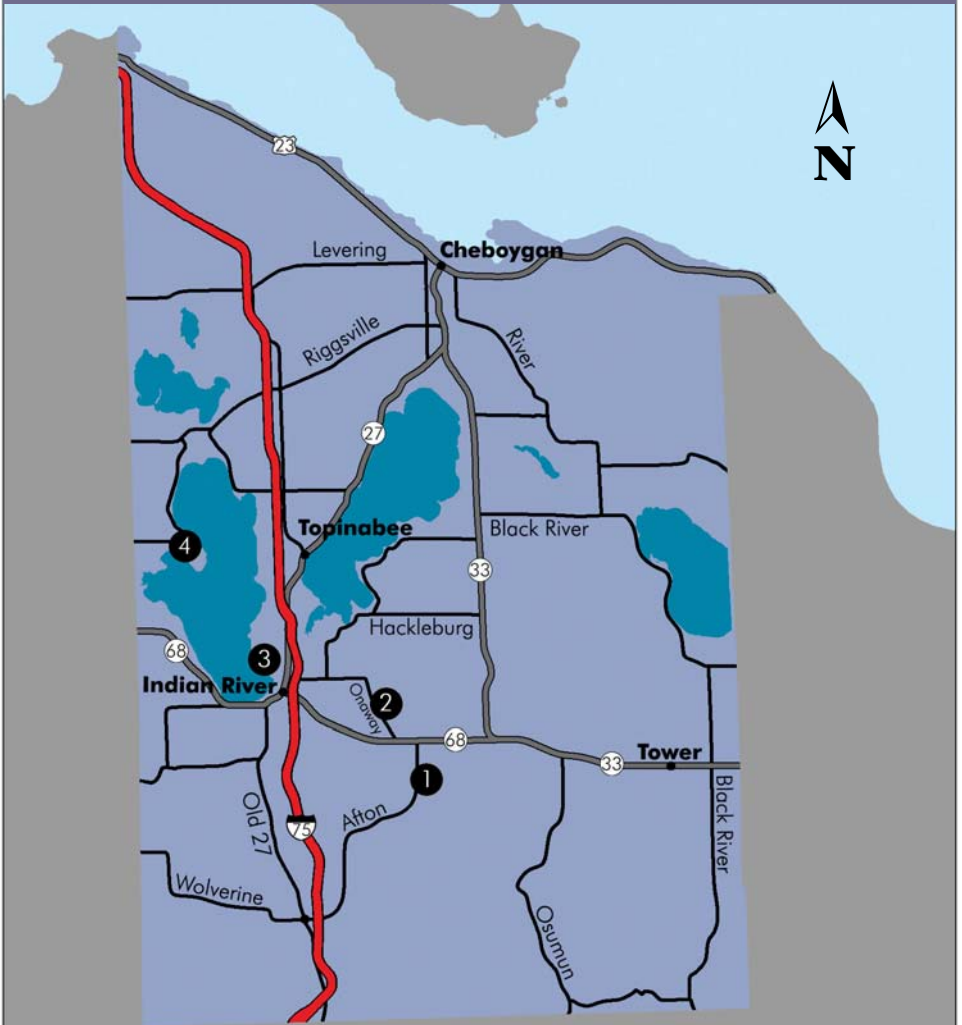


MAP OF
CHEBOYGAN COUNTY PRESERVES



- 1 Andreae (P. 30)
- 2 Colonial Point/Chaboiganing (University of Michigan) (P. 31)
- 3 Helmer's Dam/Robert D. VanCampen (P. 32)
- 4 Seven Spings (P. 33)



Agnes S. Andreae Nature Preserve

Size: 111 acres

Frontage: 1.1 miles on the Pigeon River

Land Description:

Set in the Pigeon River country, the Andreae Preserve contains oak/pine forests set above the river on steep bluffs.

Trails:

A two-track road provides access to the cabin. Foot trails provide approximately one mile of easy hiking, and a footbridge crosses the river.



Michael Jordan

In 1983, Agnes S. Andreae donated 27 acres of land with frontage on the Pigeon River to the Little Traverse Conservancy. The donation included a small cabin built upon a bluff overlooking the river. The cabin is available for use (at no charge) by

non-profit or community groups. Reservations are required by calling 231.347.0991.

In 2000 and 2001, the Conservancy acquired additional 33-acre, 21-acre, and 30-acre parcels, adding hiking space and protecting an additional mile of river frontage. Adjacent land was also protected in 2001 and 2005 through a reserved life estate, protecting another 2.9 miles of Pigeon River frontage.



Directions: From Indian River, take M-68 east 5 miles and turn left onto Onaway Road. Follow Onaway Road 1½ miles to Riverwood Road and turn right. At the “T” junction with Big Sky Trail, the Preserve sign is visible near the gate. Park in front of the split rail fence.



Marked
Trails

UNIVERSITY OF MICHIGAN'S/LITTLE TRAVERSE CONSERVANCY'S
Colonial Point Memorial Forest/Chaboiganing Nature Preserve

Phoenix Photographic Studio



Size:

Colonial Point Memorial Forest: 290 acres
Chaboiganing Nature Preserve: 192 acres

Land Description: Mostly wooded, Colonial Point includes the largest old growth red oak stand in the northern Lower Peninsula with trees up to 150 years old. The Chaboiganing Preserve is a mixture of both open fields and woodlands.

Trails: Parking is available to access more than 2½ miles of easy trails for hiking and cross country skiing.

The protection of this remarkable area began in 1985 when the Colonial Point Forest was purchased by a sawmill and slated for heavy logging. The local community voiced great concern for this treasured area because of its red oak forest, one of the most significant in the Midwest. In response, the Little Traverse Conservancy coordinated an effort to purchase the property with a significant grant from the Michigan Natural Resources Trust Fund. Many partners including the University of Michigan Biological Station, the Michigan chapter of The Nature Conservancy, local property owners, and other caring citizens joined forces to raise the additional funds needed to complete the purchase. Colonial Point is now owned by the Biological Station. In 1993, the Little Traverse Conservancy used donated funds to purchase 192 acres adjacent to the Colonial Point Memorial Forest. The property is known as the Chaboiganing Nature Preserve. Combined, this is one of the most impressive protected areas in the region.



Directions: Take US-31 north from Petoskey 14 miles to Brutus Road. Turn right (east) and travel 4 miles on Brutus Road. Parking lot for the Chaboiganing Preserve is across from the old Burt Lake Market. Colonial Point Forest is located on the first road on the right past the preserve. The trailhead/entrance is ¼ mile east on Indian Point Road.



Helmer's Dam/Robert D. VanCampen Preserve

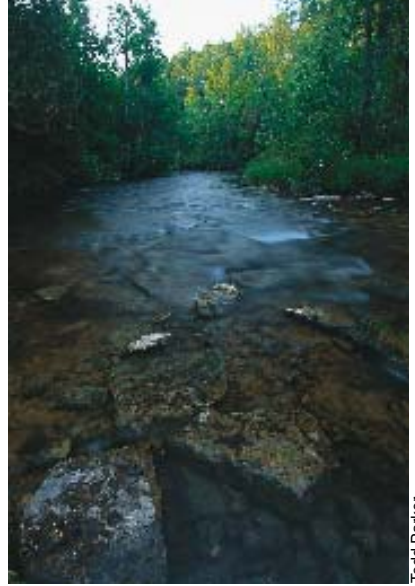
Size: 200 acres

Frontage: 1¼ miles Pigeon River

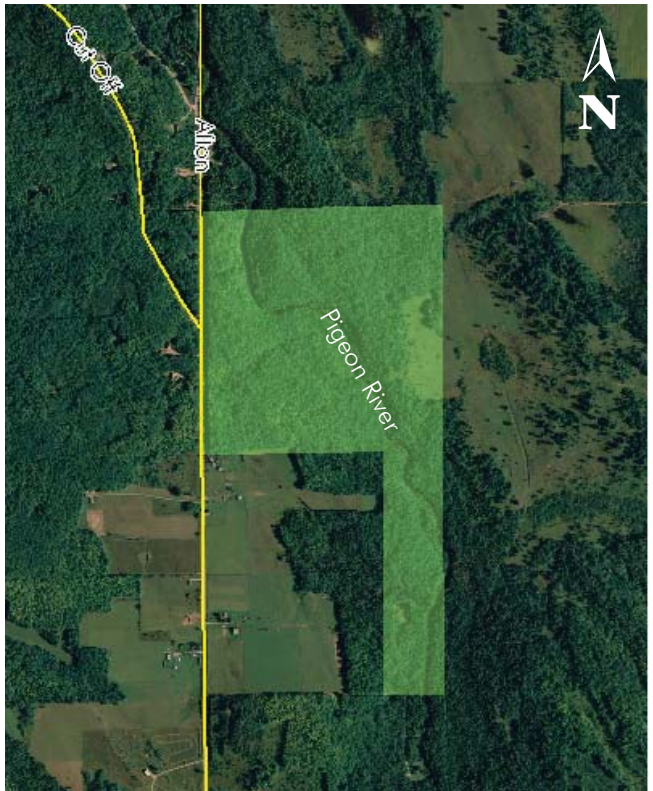
Land Description: Mostly wooded, the primary feature of this property is the river. Before its protection, the property was the largest remaining private undeveloped stretch along the Pigeon River. Because the river becomes very wide at this point, the stretch is well-loved by anglers.

Trails: A two-track pullout is available with a short walk to the river.

When the property became available for purchase, a year-long fundraising campaign resulted in its acquisition as a nature preserve. The preserve is named for an old dam that used to exist at the site. John Woollam, a primary donor to its protection, named the preserve in honor of his father-in-law, Robert D. VanCampen of Harbor Springs, an avid hunter, fly angler, and outdoorsman.



Todd Patker



Directions: From Indian River, take M-68 west to Afton Road. Turn right and travel 1.3 miles to the preserve on the right where Cut Off Road branches to the left.



Trails
Not
Marked

Seven Springs Nature Preserve

Size: 53 acres

Frontage: 2,200 feet along Burt Lake

Land Description: Numerous springs along the shore provide habitat for the endangered Michigan Monkey Flower. Beautiful upland forest graces this preserve's upper portions while dense forested wetlands can be found below the dramatic bluff that runs across the property just back from the water's edge. The wave-swept shore consists of cobble beaches and beds of emergent rushes providing good habitat for fish and other aquatic life.

Trails: A parking area off Chippewa Beach Road leads to less than ½ mile of combined trails with an overlook at the lake.

Phoenix Photographic Studio



The Conservancy acknowledges the Harris and Weiss families of Columbus Beach who initiated this land's protection. These families partnered to provide funding toward its purchase, and coordinate fundraising efforts which brought additional support from Columbus Beach families and many other Burt Lake residents and resorters.

Directions: From Hwy.27/75 in Indian River, turn west onto Prospect Road, just north of the bridge. Continue straight onto Chippewa Beach Road 1.1 miles which curves north. Look for the preserve sign about ¼ mile past the curve.

