

MAP OF
CHARLEVOIX COUNTY PRESERVES



- 1 Barney's Lake (P.20)
- 2 Little Sand Bay Nature Preserve (P.21)
- 3 Millers Marsh (Central Michigan University) (P.22)
- 4 North Point (Charlevoix Township) (P.23)
- 5 Charles A. Ransom (P.24)
- 6 Raven Ridge (P.25)
- 7 St. Clair Lake/Six Mile Lake Natural Area (P.26)
- 8 Sleepy Hollow (P.27)
- 9 Susan Creek (P.28)



Barney's Lake Preserve

Size: 120 acres

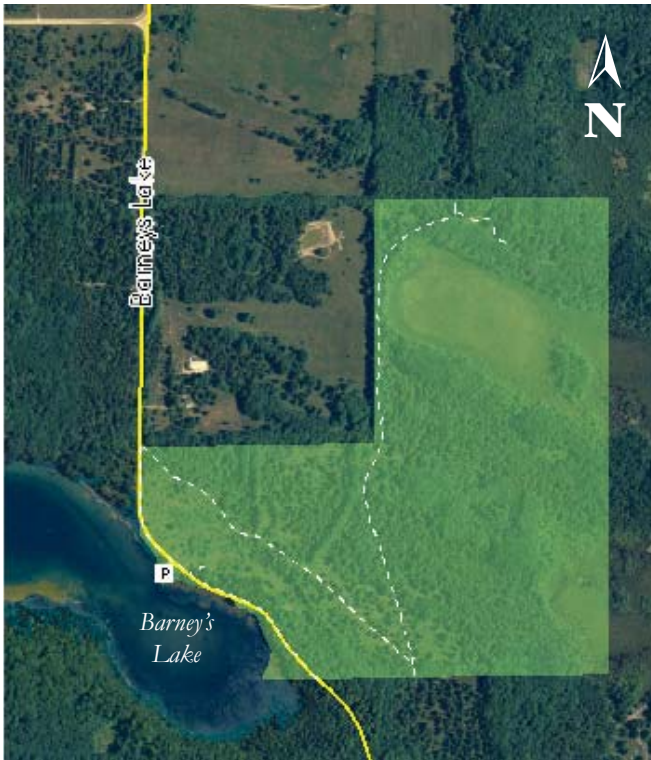
Frontage: 2,200 feet on Barney's Lake

Land Description: Aquatic habitats include an open bog on the southeast tip of the lake and sedge meadows along the beach. The southwestern corner of the preserve is a cedar swamp.

Trails: A parking area is located on the lake side of the preserve. Old two tracks are found on the upland portion of the property.

Barney's Lake Preserve is located in the north central part of Beaver Island, about three miles southwest of St. James. The preserve was donated to the Conservancy in 1988 by the heirs of Bernard and Margaret O'Donnell. Bernard O'Donnell (great-grand nephew) and Theresa Gacek (great-great-grand niece) were instrumental in carrying out the family's wishes that the land be kept in its natural state and available to the public.

The old O'Donnell homestead site is east of the lake across from the lake viewing area. Once cleared fields are now a study in plant succession and stones are piled along the old field and pasture boundaries.



Directions:

From Port of St. James, take Kings Hwy. south $1\frac{1}{4}$ miles to Barney's Lake Road North and turn right. Continue $2\frac{1}{2}$ miles and the preserve can be found on both sides of the road. Look for a sign on the left side. Parking is on the right.



Little Sand Bay Nature Preserve



Size: 60 acres

Frontage: 1,300 feet
on Lake Michigan

Land Description:

A mix of conifer forest, thick cedar swamp, and sand dune habitats. Lake Huron Tansy and other threatened or endangered species thrive here, including the Michigan Monkey Flower which is found in only 20 other known sites in the world.

Trails: A trail and foot bridges allow visitors to explore without causing damage to the sensitive habitat. The preserve provides public access to the lake and to a shallow, marshy beach.

Designated by a group of island residents as the number one priority for acquisition and preservation, the Conservancy acquired the original 60 acres in 1994. In 1999, the Conservancy assisted the state in acquiring 30 more acres. When added to adjacent state land to the north, more than 1¼ miles of shoreline are now protected.



Directions: From the Welke's airport, go south on East Side Drive for approximately 200 yards. Look for a sign on the left side of the road.



Marked
Trails

Miller's Marsh Natural Area

Size: 230 acres

Land Description: Miller's Marsh is the largest and most diverse marsh found on Beaver Island. Significantly contributing to the diversity of this wetland is its combination of open shallow water, extensive sedge (to the west), and sphagnum mats (to the east) surrounded by a vast mature second growth beech-maple forest. Home to frogs, migratory birds, and water fowl.

Trails: A small parking area leads to a one mile trail that includes an interpretive brochure. This area also marks the southern end of the island's Doty's Camp Trail.



The southernmost body of water on Beaver Island's west side is Miller's Marsh, named after former Beaver Head Lighthouse Keeper Harrison "Tip" Miller. Purchased by the Little Traverse Conservancy in 1997, this property was conveyed to the Central Michigan University Biological Station in 1998.

Directions: From St. James, take the King's Hwy. south for 4 miles. Turn right (west) onto Paid Een Ogs Road. Continue about 1 1/2 miles. At the four corners and airport turn left (south) onto West Side Drive. Continue on West Side Drive approximately five miles to Miller's Marsh which will be on the left (east) side of the road.



Marked
Trails



North Point Nature Preserve

Size: 27 acres

Frontage: 2,800 feet on Lake Michigan

Land Description:

Opportunities to see several forests in several stages of succession, Lake Michigan shoreline and dunes, and three threatened plant species: Pitcher's Thistle, Lake Huron Tansy, and Pumpell's Bromegrass.



Trails: Located adjacent to the Mt. McSauba recreation area just outside the city of Charlevoix, you can drive to the trailhead or enter from Mt. McSauba. A network of trails offering beach access and wooded back dunes cover the property (most frequently used trails are shown on the map). This property provides excellent opportunities to hike and enjoy the ecological diversity of northern Michigan.

North Point was purchased with funds contributed by the people and businesses of the Charlevoix area, with the help of a grant from the Michigan Natural Resources Trust Fund. The land was deeded by the Little Traverse Conservancy to Charlevoix Township as a public nature preserve.

Directions: From US-31 on the far north end of Charlevoix, take Mercer Road north (toward the lake). Turn left on Maple and then right on McSauba. Look for parking on your left near the sign or continue to the parking/turn around near the lakeshore.

Marked Trails



Charles A. Ransom Nature Preserve

Size: 80 acres

Land Description:

A mix of open fields (providing scenic views) and northern Michigan hardwoods.

Trails: From the parking area, you will find the trailhead to a 1½ mile trail system. The terrain is quite steep and hilly.



Phoenix Photographic Studio

Commanding one of the most spectacular views in northern Michigan, the Ransom Preserve is well worth a visit. The property, along with the manager’s residence (now removed), was donated in 1976 by Woodbury and Christiana Ransom in memory of their son. From its highest elevation of 320 feet above Lake Michigan, viewers can see much of western Charlevoix County, a broad expanse of Lake Michigan, four islands, and the distant Leelanau Peninsula on a clear day.



Directions:

From Petoskey, take US-31 south approximately 9 miles to Burgess Road and turn left. Go 3½ miles to Quarterline Road and turn left. Then go 1 mile to Maple Grove Road and turn left. The parking lot is ¾ mile down Maple Grove Road.

	Marked Trails

Raven Ridge Nature Preserve

Size: 140 acres

Land Description:

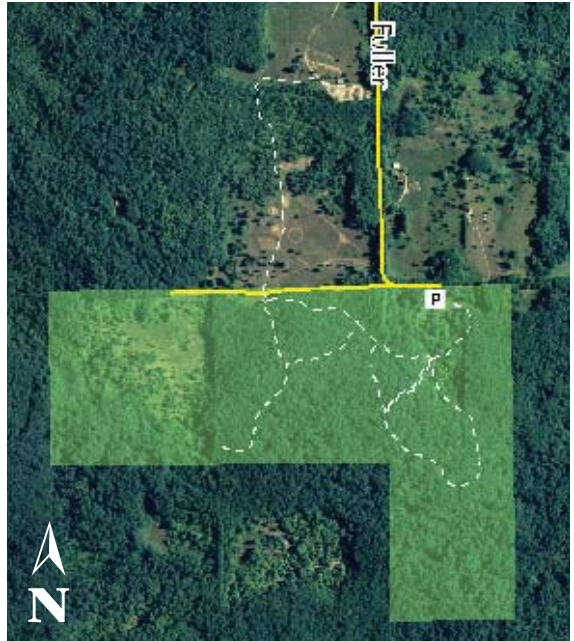
A mix of open fields and wooded ridges. The property includes an old homestead site which is available for student archeological studies.

Trails: A rustic parking area off of a dirt road is located at the trailhead. Trails total more than 1½ miles and are quite hilly. One trail takes you to the Raven Hill Discovery Center which lies adjacent to the preserve.

The Raven Ridge property was purchased in 2001 as a result of joint fundraising efforts by the Conservancy and the people of Raven Hill Discovery Center. The Discovery Center property provides unique environmental education opportunities on more than 300 acres of land. Visit www.ravenhilldiscoverycenter.com to find out what upcoming activities are happening next door to this preserve.



Cheri Leach



Directions: From Petoskey, take US-131 south to Boyne Falls. Turn west (right) at the blinker light in Boyne Falls and go .8 miles along M-75. Turn left onto C-48 (Deer Lake Rd). Follow to stop sign and turn left toward East Jordan (still on C-48). Go 4 miles and turn left on Pearsall Rd. Within 50 feet, turn left on Fuller Rd. Go up the big hill past Raven Hill Discovery Center until you reach a "T." Turn left on Rogers Rd. and the parking area is on the right.



St. Clair Lake/Six Mile Lake Natural Area

Size: 192 acres

Frontage: 8,155 feet along St. Clair Lake and Sinclair River

Land Description:

The protected land includes marshes, cedar wetlands, fields, and uplands. This natural area provides one of the longest stretches of undeveloped shoreline within the Elk River Watershed.

It is located in the upper portion of an interconnecting chain of lakes and rivers which crosses the Charlevoix-Antrim county border. The Sinclair River connects the two lakes, making it a beautiful place for silent water sports. Mink, otter, great blue heron, belted kingfishers, and an occasional bald eagle are among the region's inhabitants.

Trails: A small parking area is found off Ellsworth Road on the South Arm Township portion of the natural area. A short, woodchipped trail and boardwalk leads to an overlook of St. Clair Lake. A canoe/kayak put-in is found at the end of the parking area.

The protection of the natural area was made possible by the efforts of a local grassroots group which initiated the project, raised funds, and prompted the first joint project between the Little Traverse Conservancy, Grand Traverse Regional Land Conservancy, and local residents. Funds were also provided by the Malpass Family and South Arm Township.



Phil Ohmer



Directions:

From the village of Ellsworth, take C-48 east approximately two miles to South Arm Township Park and a small parking area on the right (south) side of the road. There is a rustic boat launch on the river.



Sleepy Hollow Nature Preserve

Phil Ohmer



Size: 55 acres

Frontage: A spring-fed stream flows through the property.

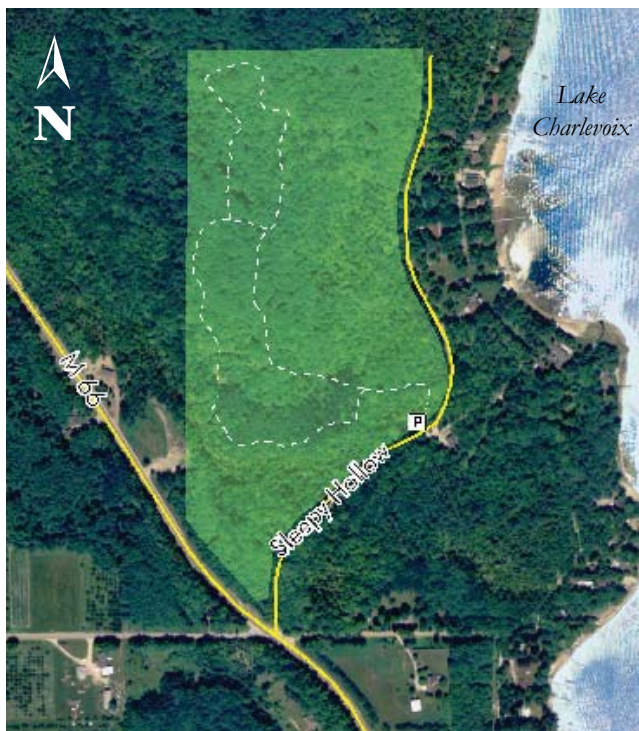
Land Description: The stream running through this preserves is home to brook trout and empties into the South Arm of Lake Charlevoix. The property is dominated by Sugar Maple, American Beech, and Ash, and also includes Aspen and Hemlock.

Trails:

A small parking area and more than one mile of easy walking trails are available.

Donated to the Conservancy in 1980 by an anonymous donor, the Sleepy Hollow Nature Preserve is important to the protection of the Lake Charlevoix Watershed.

The beautiful forest is second growth, and large stumps with fire scars scattered throughout the preserve stand as testimony to its past logging days.



Directions: From Charlevoix, take M-66 south approximately 7 miles to Sleepy Hollow Lane, which is opposite Phelps Road. Turn left onto Sleepy Hollow Lane. Drive in to the parking area on the left.



CHARLEVOIX COUNTY
Susan Creek Nature Preserve

Size: 223 acres

Frontage: Nearly a mile of frontage on Susan Creek and nearly a mile of frontage on US-31.

Land Description: Outstanding wildlife habitat provided by a mix of habitat types including wet meadows, black ash swamp, cedar thickets, ponds, and hardwood forest.

Trails: A small parking area and 1½ miles of trails are available.



Todd Parker



This preserve was a significant success story in the Conservancy's efforts to protect the US-31 scenic road corridor between Petoskey and Charlevoix. Consisting of three separate tracts totalling 223 acres, the preserve lies adjacent to an additional 55-acre preserve owned and managed by the Little Traverse Bay Bands of Odawa Indians. Funding came from a Michigan Department of Transportation grant, a grant from the Michigan Department of Environmental Quality, and private funds from the Frey Foundation, the Herbert H. and Grace A. Dow Foundation, the Offield Foundation, and the Americana Foundation. Funding to develop the trails came from the James Buchanan Family as well as the Charlevoix County Community Foundation.

Directions: Four miles east of Charlevoix and 11 miles west of Petoskey, the entrance to Susan Creek is a few hundred yards south of and across from the Little Traverse Wheelway. Parking and a green gate are on the south side of US-31 a few hundred yards southeast of the entrance to the Big Rock Restoration Site.

